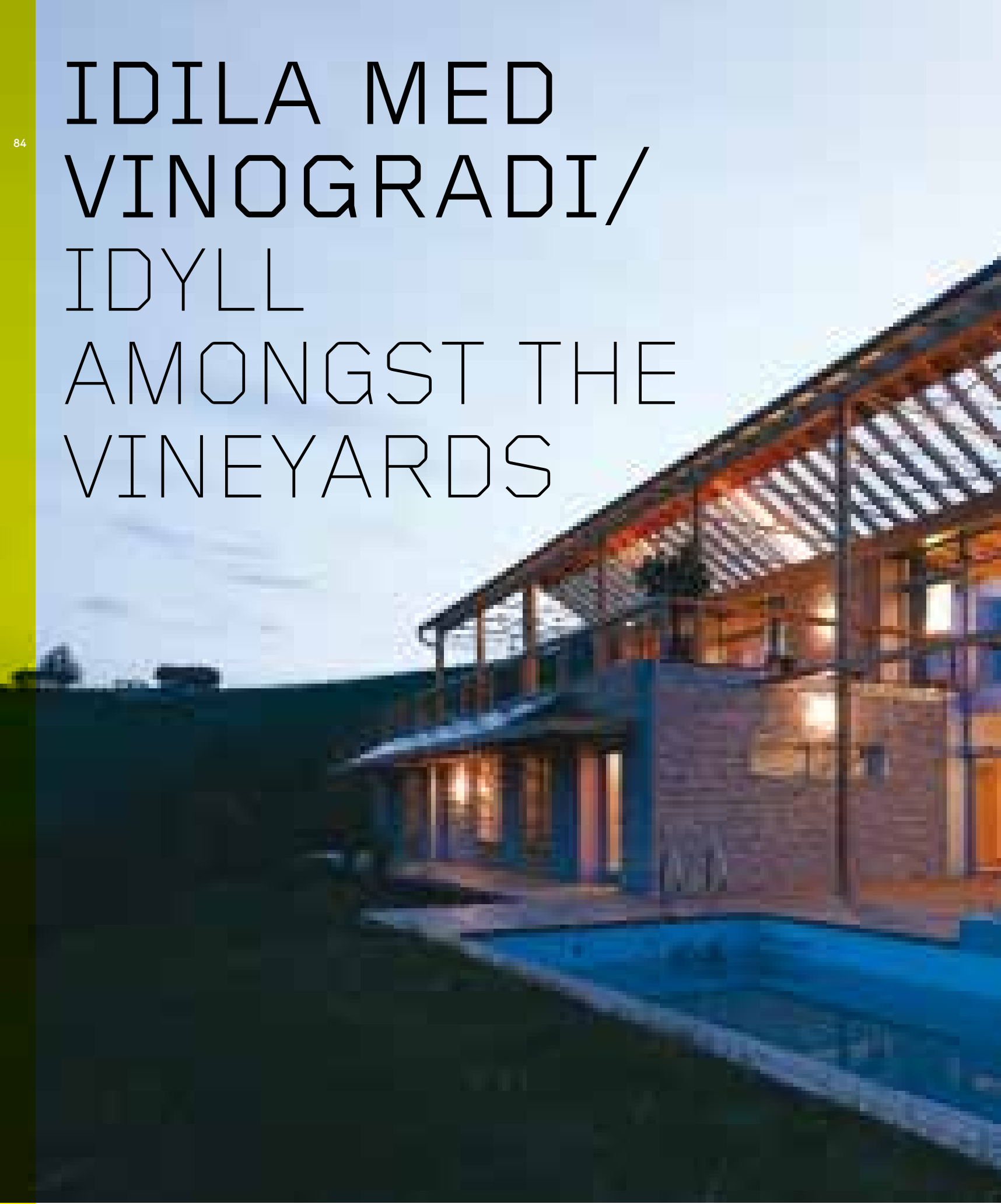



# IDILA MED VINOGRADI/ IDYLL AMONGST THE VINEYARDS





Meditersko  
bivanje na terasi/  
Mediterranean living  
on the terrace

LEPE HIŠE/  
BEAUTIFUL  
HOUSES

85

-----  
Besedilo/Text:

**Jernej Markelj**

Fotografije/  
Photographs:

**Manfred Seidl**

-----  
Arhitekti/Architects:

**Albertoni**

Lokacija/Location:

**Ratsch a. d.**

**Weinstraße,**

**Avstrija/Austria**

Izvedba/Completed:

**2008**

-----  
**Med razgibanimi, s trtami prepređenimi štajerskimi griči v neposredni bližini meje s Slovenijo, hiša Dielacher uspešno združuje na eni strani sodoben arhitekturni videz in na drugi strani prilagojenost lokalnemu okolju, uporabo tradicionalnih materialov z visoko tehnologijo ter prostorsko razkošnost z energetske samozadostnostjo.**

-----  
Naročnik hiše, službeno razpet med Dunajem, Ljubljano in Beogradom, je želel uresničiti svojo dolgoletno željo po domovanju z zidanico med vinskimi trsi, ki bi mu hkrati služilo tudi za poslovne stike.

Prostorska zasnova sledi zahtevam po ločitvi javnega in zasebnega dela hiše. Zgornji del z vhodom vsebuje skupne prostore, spodnji pa je namenjen intimnemu razvajanju. Razpostavljena objekta sledita topografiji terena in s tem ustvarita zunanji terasi, ki ju povezuje dvoetažna prostostoječa streha.

Posebnost v tradicionalne materiale oblečene hiše je velikanska pokrita terasa v prvem nadstropju - zračni salon s čudovitim razgledom po okoliških vinogradih, ki odpira dnevne prostore navzven in omogoča sprejem gostov v velikem slogu.

Prostostoječadvokapnica posnema obliko streh okoliških hiš in je prepoznavni element sicer kubične stavbe. Južna stran strehe je sestavljena iz nove vrste tankih sončnih celic, ki delno prepuščajo žarke ter tako delujejo kot senčilo in zaščita pred dežjem.



Zemeljski kolektorji in toplotna črpalka zagotavljajo ekološko vzdržno in kljub visoki začetni investiciji dolgoročno najvarčnejšo rešitev za ogrevanje in pripravo tople vode. Vgrajene sončne celice ustvarjajo dovolj energije za samozadostno delovanje ogrevalnega sistema in v tej nizkoenergijski stavbi obenem pokrijejo do 50 odstotkov potreb po elektriki, kar v nemirnih časih finančne krize, ki lahko kaj kmalu privede do zviševanja cen energije, lastnikom zagotavlja mirno spanje. Svobodno odločanje na področju trajnostne arhitekture in alternativnih virov energije imajo arhitekti skupine Albertoni v krvi. Presežno arhitekturo ustvarjajo s smiselnim povezovanjem funkcije, tehnologije in estetike, ne da bi katero od teh komponent okrnili: "Kriterijev za pasivno hišo zavestno nismo popolnoma izpolnili. Odpovedati bi se namreč morali povezanosti dneve sobe z vrtom na severni strani in nadkritemu zračnemu salonu, kar bi zmanjšalo kakovost bivanja in omejilo stik z zunanostjo na tej edinstveni lokaciji."

► ENGLISH TRANSLATION

#### **IDYLL AMONGST THE VINEYARDS** **Mediterranean living on the terrace**

**Right next to the border with Slovenia, the Dielacher house, set amongst rolling, vine-covered Styria hills, successfully combines a modern architectural appearance on the one hand and conformity to the local environment on the other, use of traditional materials with high-tech and spatial splendour with energy self-sufficiency.**

The client, whose job forces him to commute between Vienna, Ljubljana and Belgrade, wanted to realise his long-lasting wish for a home, with a vineyard cottage amongst the vines, which would also serve him well for his business contacts.

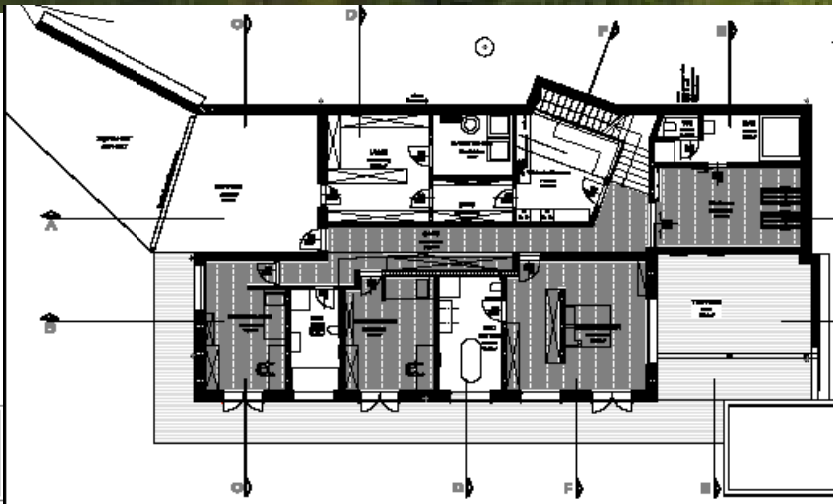
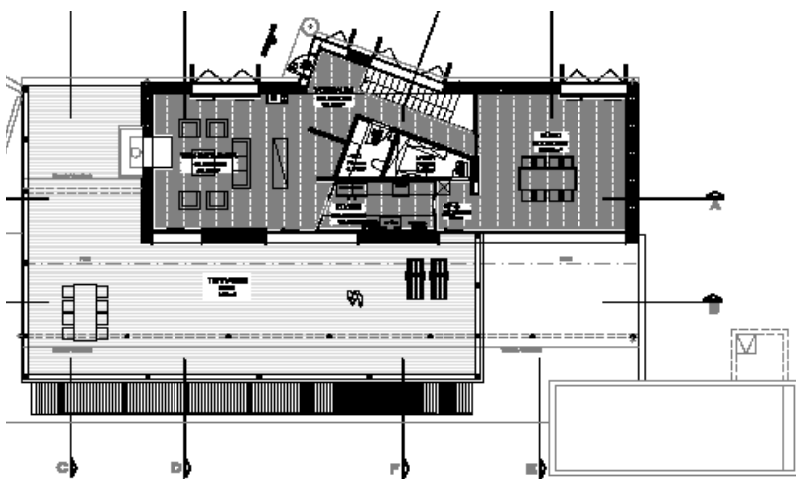
His instructions were to separate the public and private part of the house, followed by the spa-

tial design. The upper part with the entrance includes common rooms, while the lower part is devoted to intimate pampering. The detached buildings follow the topography of the terrain and thus create outdoor terraces which are connected by a two-level self-standing roof.

The distinct feature of this house, dressed in traditional materials, is a huge covered terrace on the first floor - an airy salon with a wonderful view of the surrounding vineyards, which opens its living quarters outwards and allows guests to be welcomed in style.

The self-standing double pitched roof imitates the roof design of the neighbouring houses and becomes a characteristic feature of the otherwise cubic building. The southern part of the roof is made out of a new type of thin solar cells, which partly filter sunlight, and thus act as a shade and protection from the rain.

The underground collectors and heat pump ensure an environmentally sustainable and most cost-efficient solution for heating and prepara-



tion of hot water in the long-term, despite the high initial investment. The built-in solar cells create enough energy for self-sufficient operation of the heating system and also cover up to 50 per cent of electrical consumption of this low-energy building, which ensures its owners a good night's sleep during the unsettling times of the financial crisis, which can soon lead to a rise in energy prices. Architects Albertoni have free decision-making in the field of sustainable architecture and alternative sources of energy in their blood. Their ex-

cessive architecture is designed with thoughtful combination of function, technology and aesthetics, without curtailing any of these components: "We failed to completely satisfy the criteria for a passive house. We would have to sacrifice the link between the living room and the north-lying garden and the covered airy salon, which would reduce the quality of living and the connection with the outdoors at this unique location."

